

Product info:

MACH Pro



About product:

Mach 3015/4020/ 6025 are our high-end fiber cutting series machines :

- Fully enclosed protection cover, comply with European safety standard;
- ALPHA servo motors integrates with gearhead(two sides drive system), high precision, high efficiency.
- All Germany high configuration, stable, robust and durable.
- The front door is on the Y axis, easy for operation.
- Laser application parameterize design, equip with Remote Monitoring and Remote Assistance functions, more user-friendly.
- Low gas cost by precision servo gas control, low running cost.

Parameters	4020	6025
Working size	4000 x 2000 mm	6000 x 2500 mm
Laser power	4000W/6000W/8000W/10000W/12000W/15000W	
Transmission	Integrated servo motor & gearhead, two sides drive	
Loading method	Automatic hydraulic shuttle platform	
Positioning speed	240 m/min	
acceleration	2.4G	
Positioning accuracy	± 0.05mm (VDI/DGQ 3441)	
Repositioning accuracy	± 0.03mm (VDI/DGQ 3441)	
Power	18 kw	25 kw
Weight (body)	13500Kg	15500Kg
Dimension	12000x3500x2200mm	15500x4200x2200 mm



Features

- Better laser beam quality, lower operating costs, less power consumption and longer working life due to using the new generation IPG fiber laser source ;
- Eagle eye (CCD) technology, ultra-fast positioning the sheet metal edge, minimum cutting down time, In addition, it also can process punching parts and precut parts, due to secondary positioning function;
- Automatic energy saving mode: while stop over 5 minutes, machine automatically switch into "standby" mode, to reduce power consumption;
- With remote function, can remotely monitor the running conditions of machine, much easier for service and faster response;
- Equipped with PRECITEC new generation pro-cutter laser cutting head, Optimized cutting process, monitoring cutting conditions through "APP" use easily and friendly ;
- Optimized cutting technology with Programmable laser frequency and focus position, to achieve high efficiency processing on different thickness & type sheet metal. All cutting parameters can be programmed, no need human intervention, use easily and friendly;
- Auto exchanging table with Hydraulic lifting system; ensure synchronous running, reliable and stable;
- With ergonomic design, equipped with intelligent operation terminal, user-friendly and easy to learn.



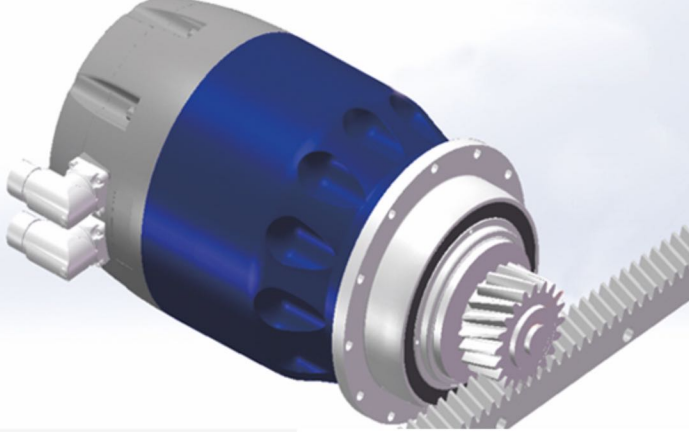
Beckhoff CNC system

Machine equipped with Beckhoff CNC system, with Ether CAT real-time control protocol, reduce machine down time and ensure fast response. Besides, the extended automation system and applications can be easily integrated into machine thanks to the open automation systems of Beckhoff CNC.

Fully enclosed housing

Full yen closed housing, Safety circuit design, equipped with laser radiation-shielding glass, Hig her safety standard, Ensure the safety of operators.





Direct drive system with High torque servo motor

Synchronous drive system on both sides of cutting bridge, Equipped with high torque direct drive system. Ensure the powerful driving, high accuracy cutting and excellent dynamic response.

Servo-control valve of cutting gas pressure

Programmable Cutting gas thanks to Servo-control valve, it can switch the type of cutting gas automatically, and accurate control the gas pressure without user intervention, use friendly and reduce gas consumption .



OPTION:



Model: HystoRe 3015

Working area: 3000mmx1500mm

Laser power:

Overall dimension: 13150mmx4800mmx4840mm

Automatic loading & unloading and storage system of laser cutting machine

Intelligent production can effectively save labor cost

The multi-layer storage unit greatly improves the utilization rate of the site

Modular design can realize multi - machine linkage loading and unloading

Bus communication and intelligent factory MES system are seamlessly connected

Features:

- * Laser cutting flexible production line is based on our MACH and WIND series laser cutting machines. On this cutting platform, HyStore series automatic loading and unloading unit is installed. In combination with the integrated flexible system developed by our company on Beckhoff system, the whole flexible production line has the following features:
- * Multi-level material storage unit greatly saves the site and improves the utilization rate of the site;
- * Fully automatic intelligent production, unmanned, greatly saving labor costs;
- * Automatic loading and unloading, greatly improve production efficiency;
- * Modular design can achieve single and multi - machine linkage loading and unloading;
- * EtherCAT bus communication enables seamless integration of smart factory MES system.

Specification

Number of store layers	8 Floor
Max tray lifting speed	0.25m/s
Max tray translational moving speed	0.4m/s
Max translation speed of loading mechanism	0.8m/s
Max lifting speed of loading mechanism	0.25m/s
Max translation speed of unloading mechanism	0.8m/s
Max lifting speed of unloading mechanism	0.25m/s
Unloading fork switching speed	0.4m/s
Vibration value	<0.5G
Running beat	905
Storage load	24MT
The scope of work	3000mmx1500mm
Overall dimensions	13150mmx4800mmx4840mm
Working environment	temp: -10~45°C humidity: ≤95%RH no condensation
Power supply	30 KVA/3P+E/380VAC±10%/50HZ
Air source	the working pressure shall not be lower than 0.6mpa, and the flow rate shall not be lower than 0.4m³/min

CONTACT INFO:



WEB: www.movs.se
Email: info@movs.se
Tel: +46 (0)702-113320