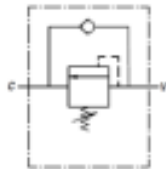


Sequence valve

Direct acting
VS2C

TAON
Hydraulik Komponenter



USE AND OPERATION:

Sequence valve is used to feed 2 cylinders in sequence: it provides flow to the secondary circuit when a primary circuit function has been completed reaching the pressure setting.

Return flow is free. It is ideal for circuits with low pressure on the secondary actuator as the pressures add to.

MATERIALS AND FEATURES:

Body: zinc-plated steel

Internal parts: hardened and ground steel

Seals: BUNA N standard

Poppet type: minor leakage

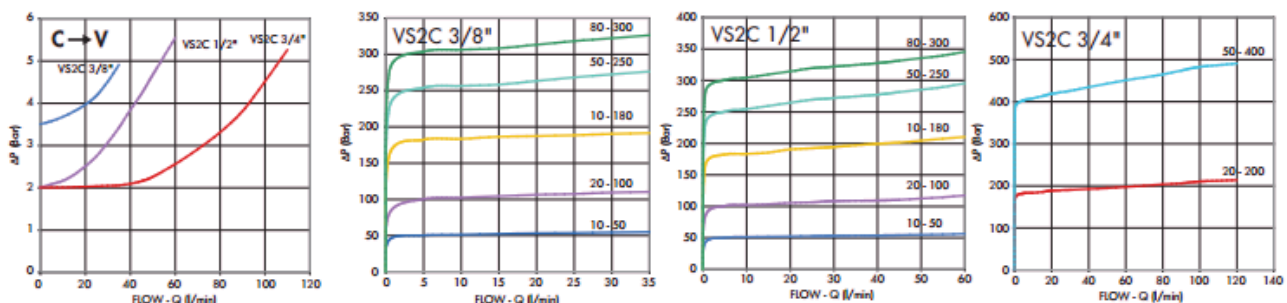
APPLICATIONS:

For use with 2 actuators, follow the mounting instructions indicated in the scheme.

For different uses, mount the valve keeping into consideration that, when the valve reaches the setting pressure, the flow goes from V towards C, whilst flow is free from C to V.

Type	Max. flow L/min.	Max. pressure Bar
VS2C 3/8"	35	350
VS2C 1/2"	70	350
VS2C 3/4"	110	350

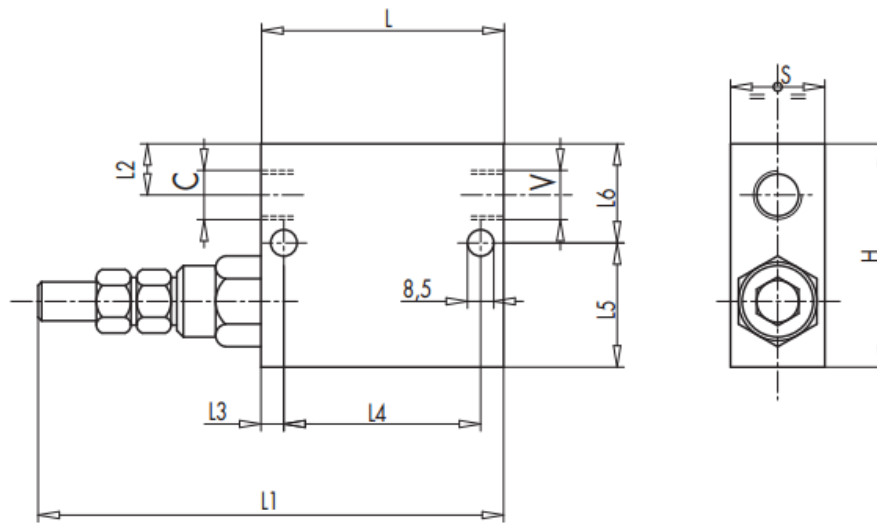
PRESSURE DROPS CURVE:



Oil temperature: 50°C – Oil viscosity: 30 cSt

Sequence valve

Direct acting
VS2C



Type	C - V GAS	L mm	L1 mm	L2 mm	L3 mm	L4 mm	L5 mm	L6 mm	H mm	S mm	Weight kg
VS2C 3/8"	G 3/8"	74	146	14	7	55	39	31	70	30	1,172
VS2C 1/2"	G 1/2"	80	152	15	7	55	37	33	70	30	1,130
VS2C 3/4"	G 3/4"	100	164	20	10	80	50	50	100	40	2,900